

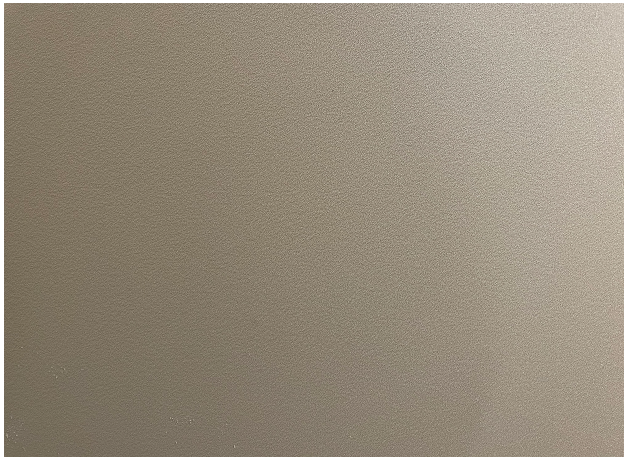
## PRODUCT DESCRIPTION

<b>FORMULA</b>	FRP
<b>FLOORING MATERIAL</b>	Pawling Corporation / WP - 60
<b>MATERIAL ACCLIMATIZATION</b>	48 Hours at 72°F or 22°C
<b>SUBSTRATE USED</b>	Drywall
<b>ADDITIONAL INFO</b>	

## PERFORMANCE

The test results produced a strong bond with acceptable peel and shear strength. Materials tested are approved for use with our adhesive over acceptable substrates. Spray-Lock does not warrant the dimensional stability of the material regardless of its thickness.

## IMAGE OF MATERIAL



## GENERAL ADHESIVE INFO

See Technical Data for adhesive specifications.

## APPLICATION NOTES

Adhesive was applied as per standard instructions.

## ADDITIONAL INFO

This report applies to the specific product as supplied to Spray-Lock for testing at the time of the test. It only describes testing performed under Spray-Lock's controlled conditions. It is not a warranty. Please refer to the warranty page at [www.spraylock.com](http://www.spraylock.com) for complete detailed warranty information

APPROVED BY:



**Michael Land**

Senior V.P. of R&D and Technical Services

Spray-Lock is not responsible for bond performance changes due to conditions beyond our control such as manufacturing changes, composition changes, profile or finish changes, storage, or application techniques. Internal quality control methods were followed unless otherwise noted. This document does not represent the opinion of the material manufacturer. This report shall not be reproduced except in full and with permission from Spray-Lock. Spray-Lock retains sole ownership of the data. Spray-Lock does not warrant the dimensional stability of the material regardless of its thickness. Spray-Lock Adhesives should always be used in accordance with Spray-Lock's issued instructions and procedures consistent with country specific standards for preparation and installation.